

## **Appendix: Uniform Lists**

### **Tots UNIFORM**

#### **Winter: Girls and Boys**

White polo shirt with green trim and school logo  
Red school joggers  
Red sweatshirt with school logo  
White plain knit socks  
Green school coat with school logo (Optional)

#### **Summer: Girls and Boys**

White polo shirt with green trim and school logo  
Green shorts with logo  
Red sweatshirt with school logo  
White plain knit socks

#### **Summer: Girls (Optional)**

Summer red and white Newbridge Summer dress with logo  
Worn with white knee high socks or White ankle socks (Plain knit only)

### **General Items**

Green overall for lunch  
Yellow pump bag with school logo  
A pair of wellington boots – dark colour preferred (black, blue or green)  
Black pumps for P.E.

### **NURSERY UNIFORM**

#### **Winter: Girls and Boys**

White polo shirt with green trim and school logo  
Red school joggers  
Red sweatshirt with school logo  
White plain knit socks  
Green school coat with school logo

#### **Winter: Girls (Optional)**

McDonald tartan skort  
Worn with navy blue tights/knee high socks (Plain knit only)

#### **Summer: Girls and Boys**

White polo shirt with green trim and school logo  
Green shorts with logo  
Red sweatshirt with school logo  
White plain knit socks

#### **Summer: Girls (Optional)**

Summer red and white Newbridge Summer dress with logo  
Worn with white knee high socks or White ankle socks (Plain knit only)

### **P.E. Kit**

White polo shirt with green trim and school logo  
Green shorts with logo  
Plain white socks  
Red school joggers  
Red sweatshirt with school logo  
Plain black pumps (indoor use)  
Plain white or black trainers (outdoor use)

### **General Items**

Green overall for lunch  
Yellow pump bag with school logo  
Green Book Bag  
Waterproof school jacket with logo (optional)  
A pair of wellington boots – dark colour preferred (black, blue or green)

## **RECEPTION UNIFORM**

### **Winter: Girls**

White Peter Pan Blouse with elasticated cuff  
McDonald Pinafore worn on the knee or below  
Cardigan (green with red trim and logo)  
Navy knee high socks or Navy tights (Plain knit only)  
Green school coat with school logo  
Green felt hat with red ribbon

### **Summer: Girls**

Summer tartan dress  
White knee high socks or White ankle socks (Plain knit only)  
Boater Hat with green ribbon  
Cardigan (as above)

### **Winter: Boys**

White school long sleeve shirt  
McDonald Tartan tie  
Navy Blue school trousers  
Pullover (green with red trim and logo)  
Grey socks (Plain knit only)  
Green school coat with school logo  
Green felt cap

### **Summer: Boys**

White school short sleeve shirt  
McDonald Tartan tie  
Navy Blue school shorts  
Grey ankle socks (Plain knit only)  
Green canvas cap

### **P.E. Kit**

White polo shirt with green trim and school logo  
Green shorts with logo  
White Knobbly Bobby Socks (girls) / Plain white sports socks (boys)  
Red school joggers  
Red sweatshirt with school logo  
Red sleeveless leotard for gymnastics  
**Plain** white or black trainers

### **Dance (Girls and Boys)**

White dance socks (Roch Valley) – girls and boys  
Black ballet shoes – girls and boys

### **General Items**

Yellow pump bag with school logo  
Green Book Bag  
Waterproof school coat with logo (optional as an alternative to school coat)  
Metal hat badge  
A pair of wellington boots – dark colour preferred (black, blue or green)

### **Stationery**

All stationery is supplied by school

## **YEAR ONE AND YEAR TWO UNIFORM**

### **Winter: Girls**

White Peter Pan Blouse with elasticated cuff  
McDonald Pinafore worn on the knee or below  
Cardigan (green with red trim and logo)  
Navy knee high socks or Navy tights (Plain knit only)  
Green school coat with school logo  
Green felt hat with red ribbon

### **Summer: Girls**

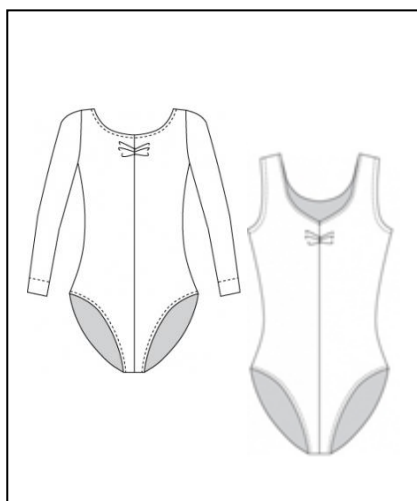
Summer tartan dress  
White knee high socks or White ankle socks (Plain knit only)  
Boater Hat with green ribbon

### **Winter: Boys**

White school long sleeve shirt  
McDonald Tartan tie  
Navy Blue school trousers  
Pullover (green with red trim and logo)  
Grey socks (Plain knit only)  
Green school coat with school logo  
Green felt cap

### **Summer: Boys**

White school short sleeve shirt  
McDonald Tartan tie  
Navy Blue school shorts  
Grey ankle socks (Plain knit only)  
Green canvas cap



### **P.E. Kit**

White polo shirt with green trim and school logo  
Green shorts with logo  
White Knobbly Bobbly Socks (girls) / Plain white sports socks (boys)  
Red school joggers with logo  
Red sweatshirt with school logo  
Navy Regulation swimming costume/trunks and red school swimming hat (Years 1 & 2 only)

### **Dance (Girls and Boys)**

Red Martine Nylon/Lycra long sleeved leotard with gathered bustling (Roch Valley) – Girls only  
White dance socks (Roch Valley) – girls and boys  
Black ballet shoes – girls and boys

### **General Items**

Plain white or black trainers (outdoor use) kept in yellow shoe bag from EYFS  
Green overall for art  
House colour pump bag (red, blue or green) with school logo for PE kit  
Green Book Bag  
Waterproof school coat with logo (optional as an alternative to school coat)  
Metal hat badge  
A pair of wellington boots – dark colour preferred (black, blue or green)  
School Descant Recorder – preferably Aulos 205A (Year Two – Summer Term only)

### **Stationery**

All stationery is supplied by school

## UPPER SCHOOL UNIFORM

### Winter

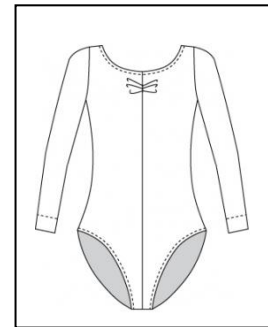
White rounded reverse collar blouse with cut away cuff  
McDonald Tartan Kilt worn on the knee or below  
Pullover (green with red trim and logo)  
Navy knee high socks or navy tights (Plain knit only)  
School blazer with logo  
Green school coat with school logo  
Green felt hat with red ribbon

### Summer

Summer tartan dress  
School blazer with logo  
White knee high socks or White ankle socks (Plain knit only)  
Boater Hat with green ribbon

### P.E. Kit

White polo shirt with green trim and school logo  
Green skort with logo  
Green school football socks  
White Knobbly Bobbly Games Socks  
Red school joggers  
Red sweatshirt with school logo  
White tennis skorts with logo (summer term only)  
Plain white trainers – for PE/Games  
Gum Shield for Hockey  
Shin Pads for Hockey



### Dance / Gymnastics

Red Martine Nylon/Lycra long sleeved leotard with gathered bustling (Roch Valley) – Girls only  
White dance socks (Roch Valley)  
Black Nylon/Lycra **Calf Length** Leggings (Roch Valley LEGL)  
Black ballet shoes  
(Please see size guide on next page. Leotard and leggings should be tight fitting for safety.)

### General Items

Green overall for art and science  
House colour pump bag with school logo  
House badge to be worn on right lapel (N-Blue/P-Green/S-Red)  
Upper school backpack with logo and pencil case (Pencil case must be used)  
Briefcase (previously used as a book bag) – Year Three to Year Five  
Waterproof school coat with logo (optional as an alternative to school coat)  
Metal hat badge  
Roll on deodorant (Years Four to Six)

### Educational Visits / Residential

Black leggings (not jeggings or jeans)  
White PE polo shirt. Red PE Sweatshirt, White socks, White School Trainers

### Additional Items

Hymn Book (available from school)  
School Descant Recorder – Brown - preferably Aulos 205A

**Stationery**

All children should have their own stationery in school. This should include:

- One school green pencil case (no other pencil case is acceptable)
- A transparent 30cm ruler (non-bendy)
- At least two sharp HB pencils – good quality preferably Staedtler
- Pencil sharpener
- Eraser – plain white
- A set of basic 24 (max) colouring pencils in a box/packet (no felt and gel pens please) or in additional larger school pencil case
- A clear, sturdy plastic A4 document wallet to keep homework / worksheets
- Ink Cartridge pen (Preferably a Vector Parker standard). Only when Pen Licence awarded during Year Four. (The stainless steel is ideal as it can be engraved and the plastic version tends to fracture when over tightened.)
- Washable blue cartridges

Ideal Packs:



**Useful Size Guide for Dance Wear:**

Most Lower School children will not require a leotard size above a Size 2.

Most Upper School girls will not require a leotard or leggings above Size 3a. (Size 3 and above are ladies sizes 10 and 12).

Childs					
Size	0	1	1b	2	3a
	Age	Age	Age	Age	Age
GB	3-4	5-6	7-8	9-10	11-13
	cm	cm	cm	cm	cm
EUR	98-104	110-116	122-128	134-140	146-152
Skirts	Small		Medium		Large