



## 2023- 2024 SCHOOL UNIFORM POLICY

Our uniform is smart, distinctive, and practical. (Uniform Lists are included in the appendix)  
Our uniform encourages a sense of pride and belonging to the community of Newbridge.

Upper School girls are expected to wear their blazers whilst moving around the school, but girls are expected to wear their hats whilst arriving at and leaving the school premises. These hats will also be worn during winter for warmth and the summer for shade at break times. They may place them on the back of their chairs during lessons.

### Hair and Jewellery

Hair which is below the collar must be tied back. All hair accessories should be **navy blue (red hair accessories are allowed for Pre-Nursery and Nursery only)** or plain metal and should be small, plain, understated and suitable for wear with uniform e.g. plain velvet hair bands are suitable; glitter, lace ribbons or flowers are not.

The only jewellery allowed is a plain, analogue wristwatch. (Electronic watches of any kind are not permitted.) No earrings or studs should be worn in school. With regards to jewellery, plastic retainers may be worn in newly pierced ears if required. If you would like your child to wear jewellery of religious significance, please inform the Headmistress in writing. One religious bangle may be worn. However, this must be either removed or covered with a wrist band during dance P.E. and Games for Health and Safety reasons. Sweatbands are available to purchase from the uniform shop for this purpose.

### School Uniform Shop

Non-official school uniform items and high street alternatives are not permitted. All school uniform should be purchased from the official school supplier Lads and Lasses. Contact details:

#### **Lads and Lasses Shops**

50a Warstones Road

Penn

Wolverhampton

WV4 4LP

Telephone: (01902) 334650

Email: ladsandlassessales@live.com

4 Bilbrook Road

Codsall

Wolverhampton

WV8 1EZ

Telephone: 01902 846262.

### Outdoor Shoes – girls (Pre-Nursery (Tots) – Year Six)

These must be black leather or patent leather. They should be Velcro strap (Lower School only), buckle bar or lace-up (Popular in Upper School). Ballet type and loafers are not acceptable. Shoes should be as plain as possible and free from additional flowers and bows. Flashing lights are not permitted and should be switched off whilst in school. The following gives examples of suitably plain shoes:



'Blunts' Shoe shop near Lads and Lasses are very helpful and understand our requirements.

Outdoor Shoes – Boys (Nursery – Year Two)

Boys' shoes must be black lace up or Velcro fastening. No trainers or trainer-shoes are allowed. Flashing lights are not permitted and should be switched off whilst in school.



Pre-Nursery (Tots) Shoes

We would prefer Pre-Nursery (Tots) children to wear plain black school shoes. We appreciate that this is not always possible due to the limited range for very small shoe sizes. However, all children are expected to wear sensible shoes, appropriate to their age and development – no boots, open-toed sandals or fashion shoes. Your child's safety is paramount. Flashing lights are not permitted and should be switched off whilst in school.

Other Items

	T	N	R	Y1	Y2	Y3	Y4	Y5	Y6
Yellow Shoe Bag	√	√	√						
Lower School Book Bag <b>which becomes</b> Briefcase		√	√	√	√	√	√	√	√
School Water bottle			√	√	√	√	√	√	√
Packet of tissues (R, Y1, Y2 - in tray) (US – in blazer)			√	√	√	√	√	√	√
Shoe Bag (House colours)				√	√	√	√	√	√
Hymn Book (Issued by school)				√	√	√	√	√	√
Recorder (Brown in colour) with cover, Aulos					√	√	√	√	√
Newbridge Backpack and School Green Pencil Case						√	√	√	√
Red and green larger school pencil case (optional)						√	√	√	√
24 (Maximum) coloured pencil crayons						√	√	√	√
30cm rigid transparent ruler						√	√	√	√
Roll-on deodorant (In Games locker)							√	√	√

Please make sure that all clothing, footwear, PE and Music equipment and stationery are clearly marked with the child's name in order to minimise losses.

Bags

Lower School children use a Newbridge book bag. In Upper School this becomes their 'briefcase' to transport items around from lesson to lesson (pencil case/reading book/homework diary/rough book). Additionally, Upper School girls need a Newbridge backpack in

order to carry homework, books and stationery to and from school. Please ensure that these are clearly labelled. Bags should be cleared out daily to avoid overly heavy bags.

Brownies may bring their uniform into school in a Brownie drawstring bag. This can be stored in the changing room on a Friday. Swimming kit may be brought in a swimming plastic pump style bag. Larger bags cannot be stored in school. No other bags are allowed in school as we do not have the storage space. Such bags left on the floor become trip hazards and obstruct fire exit routes.

### Avoiding Lost Property

**All** items used in school should be named as this avoids lost property. Clearly named items can be returned to their owner, quickly and efficiently. All clothes items should be labelled clearly on the inside, in a visible place. Clothing labelled inside pockets is very difficult for your child to identify easily and will therefore become easily mislaid. Coats, blazers, cardigans, jumpers, sweatshirt tops and polo shirts should be labelled in the nape of the neck/collar.

It is important that each child learns to look after their own property. No money, mobile phones, hand held technology, toys, jewels, or valuables should be brought into school. Any un-named items found are placed in the Lost Property Box in the PE Changing room lobby. Sometimes, money has to be brought into school. **However, please ensure that it is in a sealed envelope or named purse, with a child's name, class and purpose for the money clearly marked on the outside of the envelope.**

## **Appendix: Uniform Lists**

### **PRE-NURSERY (Tots) UNIFORM**

#### **Winter: Girls and Boys**

White polo shirt with green trim and school logo

Red school joggers

Red sweatshirt with school logo

White plain knit socks

#### **Winter: Girls (Optional)**

McDonald tartan skort

Worn with navy blue tights/knee high socks (Plain knit only)

Green school coat with school logo (Optional)

#### **Summer: Girls and Boys**

White polo shirt with green trim and school logo

Green shorts with logo (for PE)

Red sweatshirt with school logo

White plain knit socks

#### **Summer: Girls (Optional)**

Summer red and white Newbridge Summer dress with logo

Worn with white knee high socks or White ankle socks (Plain knit only)

#### **Summer: Boys (Optional)**

Navy Blue formal school shorts

#### **General Items**

Green overall for lunch

Yellow pump bag with school logo

A pair of wellington boots – dark colour preferred (black, blue or green)

Black pumps for P.E.

## **NURSERY UNIFORM**

### **Winter: Girls and Boys**

White polo shirt with green trim and school logo  
Red school joggers  
Red sweatshirt with school logo  
White plain knit socks  
Green school coat with school logo  
Black school shoes

### **Winter: Girls (Optional)**

McDonald tartan skort  
Worn with navy blue tights/knee high socks (Plain knit only)

### **Winter: Boys (Optional)**

Navy Blue formal school trousers

### **Summer: Girls and Boys**

White polo shirt with green trim and school logo  
Green shorts with logo (For PE)  
Red sweatshirt with school logo  
White plain knit socks

### **Summer: Girls (Optional)**

Summer red and white Newbridge Summer dress with logo  
Worn with white knee high socks or White ankle socks (Plain knit only)

### **Summer: Boys (Optional)**

Navy Blue formal school shorts

### **P.E. Kit (Please name all items (including socks))**

White polo shirt with green trim and school logo  
Green shorts with logo  
Plain white socks  
Red school joggers  
Red sweatshirt with school logo  
Plain black pumps (indoor use)  
Plain white trainers (outdoor use)

### **General Items**

Green overall for lunch  
Yellow pump bag with school logo  
Green Book Bag  
Waterproof school jacket with logo (optional)  
A pair of wellington boots – dark colour preferred (black, blue or green)  
Green Newbridge Cap

## RECEPTION UNIFORM

### **Winter: Girls**

White Peter Pan Blouse with lace trim and elasticated cuff  
McDonald Pinafore worn on the knee or below (Navy cycling shorts may be worn underneath if required)  
Cardigan (green with red trim and logo)  
Navy knee high socks or Navy tights (Plain knit only – no patterns)  
Green school coat with school logo  
Green felt hat with red ribbon and hat badge

### **Summer: Girls**

Summer tartan dress (Navy cycling shorts may be worn underneath if required)  
White knee high socks or White ankle socks (Plain knit only – no patterns)  
Boater Hat with green ribbon and hat badge  
Cardigan (as above)

### **Winter: Boys**

White school long sleeve shirt  
McDonald Tartan tie  
Navy Blue school trousers  
Pullover (green with red trim and logo)  
Grey socks (Plain knit only)  
Green school coat with school logo  
Green felt cap

### **Summer: Boys**

White school short sleeve shirt  
McDonald Tartan tie  
Navy Blue school shorts  
Pullover (green with red trim and logo)  
Grey ankle socks (Plain knit only)  
Green canvas cap

### **P.E. Kit (Please name all items including socks)**

White polo shirt with green trim and school logo  
Green shorts with logo  
White Knobbly Bobbly Socks (girls) / Plain white sports ankle socks (boys)  
Red school joggers with logo  
Red sweatshirt with school logo  
Either Plain White trainers or Black Points (Parental choice – only one pair required)  
Green Newbridge Sports Cap  
\*Red Towelling Wristband to cover religious bangles if not able to be removed (safety reasons)

### **Dance (Girls and Boys)**

Red Nylon/Lycra long sleeved leotard with gathered bust line– Girls only  
Black Nylon/Lycra **Calf Length** dance leggings – Girls only  
(Please see size guide on next page. Leotard and leggings should be tight fitting for safety.)  
White dance socks  
Black ballet shoes

### **General Items**

Yellow pump bag with school logo for PE kit with pumps or trainers  
Green Book Bag  
Waterproof school coat with logo (optional as an alternative to school coat)  
A pair of wellington boots – dark colour preferred (black, blue or green)

## YEAR ONE AND YEAR TWO UNIFORM

### Winter: Girls

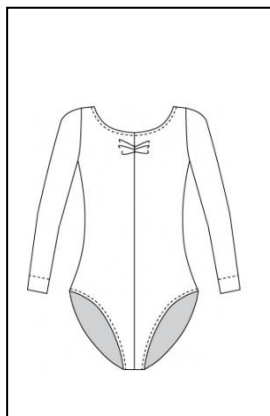
White Peter Pan Blouse with lace trim and elasticated cuff  
McDonald Pinafore worn on the knee or below (Navy cycling shorts may be worn underneath if required)  
Cardigan (green with red trim and logo)  
Navy knee high socks or Navy tights (Plain knit only)  
Green school coat with school logo  
Green felt hat with red ribbon and hat badge

### Summer: Girls

Summer tartan dress (Navy cycling shorts may be worn underneath if required)  
White knee-high socks or White ankle socks (Plain knit only – no patterns)  
Boater Hat with green ribbon and hat badge  
Cardigan (as above)

### Winter: Boys

White school long sleeve shirt  
McDonald Tartan tie  
Navy Blue school trousers  
Pullover (green with red trim and logo)  
Grey socks (Plain knit only)  
Green school coat with school logo / Green felt cap



### Summer: Boys

White school short sleeve shirt  
McDonald Tartan tie  
Navy Blue school shorts  
Pullover (green with red trim and logo)  
Grey ankle socks (Plain knit only)  
Green canvas cap

### P.E. Kit (Please name all items including socks)

White polo shirt with green trim and school logo  
Green shorts with logo  
White Knobbly Bobbly Socks (girls) / Plain white sports ankle socks (boys)  
Red school joggers with logo  
Red sweatshirt with school logo  
Plain White trainers  
Green Newbridge Sports Cap  
Navy Regulation swimming costume/trunks and red school swimming hat (Years 2 only)  
\*Red Towelling Wristband to cover religious bangles if not able to be removed (safety reasons)

### Dance (Girls and Boys)

Red Nylon/Lycra long sleeved leotard with gathered bust line – Girls only  
Black Nylon/Lycra **Calf Length** Leggings – Girls Only  
(Please see size guide on next page. Leotard and leggings should be tight fitting for safety.)  
White Dance socks  
Black ballet shoes

### General Items

**Plain** white trainers kept in yellow shoe bag from EYFS  
Green overall for art  
House colour pump bag (red, blue or green) with school logo for PE kit  
Green Book Bag  
Thinner Waterproof school coat with logo (optional as an alternative to normal school coat)  
A pair of wellington boots – dark colour preferred (black, blue or green)  
School Descant Recorder – preferably Aulos 205A (Year Two – Summer Term only)

## UPPER SCHOOL UNIFORM

### Winter

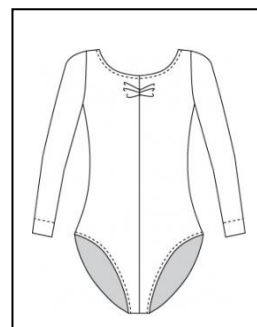
White revere collar blouse with cut away cuff  
McDonald Tartan Kilt worn on the knee or below (Navy cycling shorts may be worn underneath if required)  
Pullover (green with red trim and logo)  
Navy knee high socks or navy tights (Plain knit only)  
School blazer with logo  
Green school coat with school logo  
Green felt hat with red ribbon and hat badge

### Summer

Summer tartan dress (Navy cycling shorts may be worn underneath if required)  
School blazer with logo  
White knee high socks or White ankle socks (Plain knit only)  
Boater Hat with green ribbon and hat badge

### P.E. Kit (Please name all items (including socks))

Green PE Polo Shirt with school logo and embroidered surname  
Green Skort with school logo and embroidered surname  
Green Tracksuit Jacket with school logo and embroidered surname  
Green Tracksuit Trousers with school logo and embroidered surname  
Green school football socks with red trim for games  
White Knobbly Bobbly PE Socks  
Plain white trainers – for PE/Games  
Gum Shield for Hockey  
Shin Pads for Hockey  
Red Towelling Wristband to cover religious bangles if not able to be removed (safety reasons)  
Green Newbridge Sports Cap  
Navy Regulation swimming costume/trunks and red school swimming hat (Year 3 only)



### Dance / Gymnastics

Red Martine Nylon/Lycra long sleeved leotard with gathered bust line (Roch Valley)  
Black Nylon/Lycra **Calf Length** Leggings (Roch Valley LEGL)  
(Please see size guide on next page. Leotard and leggings should be tight fitting for safety.)  
White dance socks  
Black ballet shoes

### General Items

Green overall for art and science  
House colour pump bag with school logo (Fluorescent yellow EYFS bag can be used for trainers)  
House badge to be worn on right lapel (N-Blue/P-Green/S-Red)  
Upper school backpack with logo and pencil case (Pencil case must be used plus larger school pencil case)  
Briefcase (previously used as a book bag) – Year Three to Year Six  
Thinner waterproof school coat with logo (optional as an alternative to school coat)  
Roll on deodorant if required for sports locker

### Educational Visits / Residential

Black leggings (not jeggings or jeans)  
Green PE Polo Shirt with school logo and embroidered surname  
Green Tracksuit Jacket with school logo and embroidered surname  
White socks, Plain white trainers

### Additional Items

Hymn Book (available from school)  
School Descant Recorder – Brown - preferably Aulos 205

### Stationery



All children should have their own stationery in school. This should include:

- One school green pencil case from backpack or additional larger school pencil case (no other pencil cases are acceptable)
- A transparent 30cm ruler (non-bendy)
- At least two sharp HB pencils – good quality, preferably Staedtler
- Pencil sharpener
- Eraser – plain white
- A set of basic 24 (max) colouring pencils in a box/packet (no felt and gel pens please) or in additional larger school pencil case.
- A clear, sturdy plastic A4 document wallet to keep homework / worksheets.
- Ink Cartridge pen: When a 'Pen Licence' has been awarded during Year Four an ink cartridge pen (Preferably a Vector Parker standard) may be used. (The stainless steel is ideal as it can be engraved, and the plastic version tends to fracture when over tightened.) The only approved alternative is a Manuscripts Handwriting pen (blue) – available from amazon.
- Left-handed pupils (only) may prefer to use a specialist left-handed pen.
- Washable blue cartridges

(Please refrain from bringing in any additional stationery other than those listed above.)

Ideal Packs:



**Useful Size Guide for Dance Wear:**

Most Lower School children will not require a leotard size above a Size 2.

Most Upper School girls will not require a leotard or leggings above Size 3a. (Size 3 and above are ladies sizes 10 and 12).

Size	Childs				
	0	1	1b	2	3a
	Age	Age	Age	Age	Age
GB	3-4	5-6	7-8	9-10	11-13
	cm	cm	cm	cm	cm
EUR	98-104	110-116	122-128	134-140	146-152
Skirts	Small		Medium	Large	